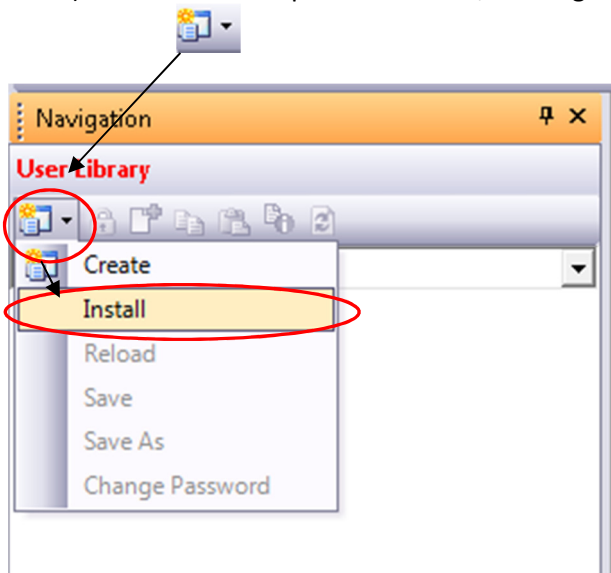

RFID User Library Installation Guide

V3.01

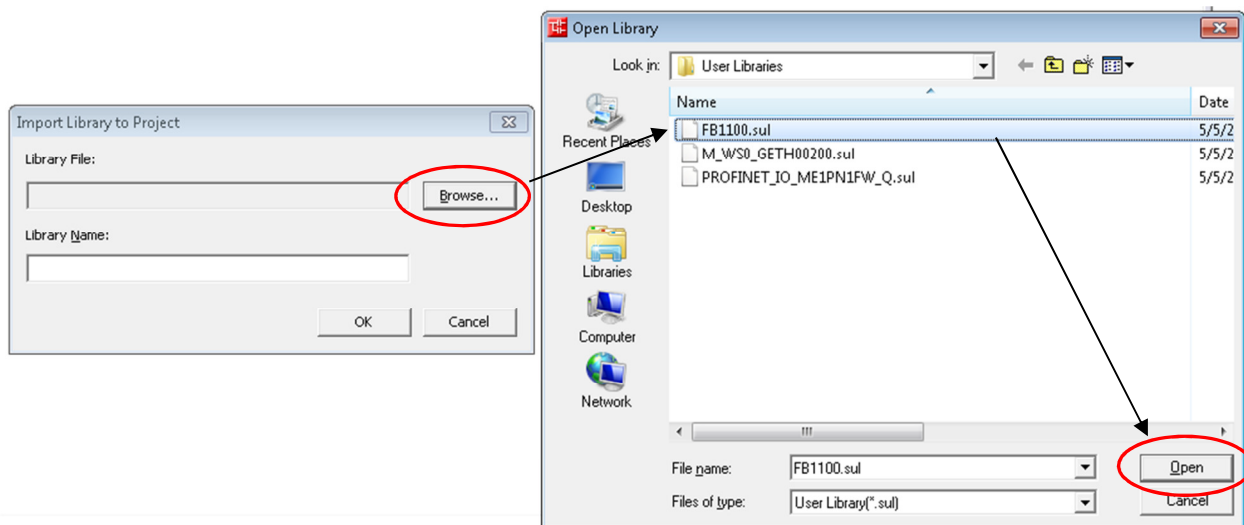
1 Import The User Library

This section explains how to import any User Library into GX Works2.

- 1) Click on the “User Library” tab on the GX Works 2 Navigation Pane.
- 2) Click the arrow part of this icon, to bring a drop-down menu. Select the “Install” option:

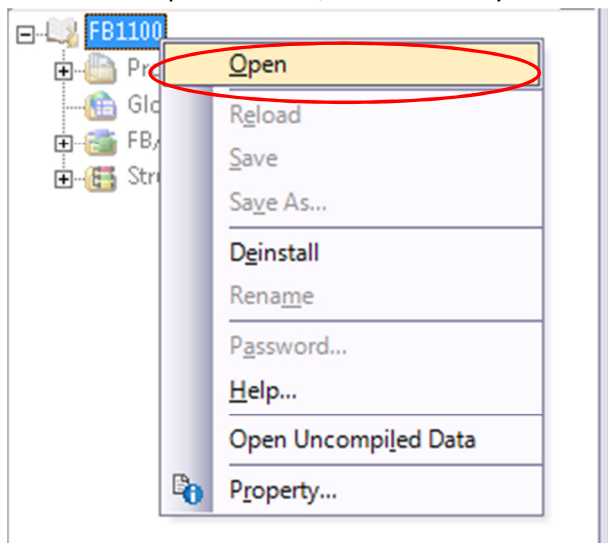


- 3) From the “Import Library to Project” window, click the Browse button, find the .sul library file, and click Open:



-
- 4) Click the “OK” button. Click “OK” again when prompted that the library has been installed.

The library elements will now show up as a directory tree in the Navigation Pane. Right click on the top folder and select “Open” to view/edit the library elements:



2 Place Programs in scan program

Open the task setting for MELPT_APP

Place MELPT_APP_GOT_RFID and the RFID program into the scan

If using RFID_Balluff_1K:

Place MELPT_APP_GOT_RFID_1K and RFID_Balluff_1K into the scan

If using RFID_Balluff_2K or RFID_Omron:

Place MELPT_APP_GOT_RFID_2K and RFID_Balluff_2K into the scan

The screenshot displays the Mitsubishi Electric software interface. On the left, the 'Navigation' pane shows a project tree. Under 'Program Setting' > 'Scan Program' > '01_MELPT', the 'APP MELPT Application Specific' folder is selected. A context menu is open over this folder, with 'Open Task Setting' highlighted. On the right, two 'Task Setting APP MELPT Ap...' windows are shown. The top window lists programs 1 through 5: MELPT_APP_GOT_RFID_1K, RFID_Balluff_1K, MELPT_APP_QD77, MELPT_APP_Profinet_Diag, and MELPT_APP_Profibus_Diag. The bottom window lists programs 1 through 5: MELPT_APP_GOT_RFID_2K, RFID_Balluff_2K, MELPT_APP_QD77, MELPT_APP_Profinet_Diag, and MELPT_APP_Profibus_Diag.

	Program Name	
1	MELPT_APP_GOT_RFID_1K	...
2	RFID_Balluff_1K	...
3	MELPT_APP_QD77	...
4	MELPT_APP_Profinet_Diag	...
5	MELPT_APP_Profibus_Diag	...

	Program Name	
1	MELPT_APP_GOT_RFID_2K	...
2	RFID_Balluff_2K	...
3	MELPT_APP_QD77	...
4	MELPT_APP_Profinet_Diag	...
5	MELPT_APP_Profibus_Diag	...

3 Delete the unused label set

The screenshot displays the MELSOFT Series GX Works2 interface. On the left, the 'Project' tree shows a hierarchy including 'Parameter', 'Intelligent Function Module', 'Global Device Comment', 'Global Label', and 'Program Setting'. The 'Global Label' folder is expanded, showing a list of labels. A confirmation dialog box is overlaid on the main window, asking 'The selected range will be deleted. Are you sure?' with 'Yes' and 'No' buttons. The background table lists labels with columns for Class, Label Name, and Data Type.

	Class	Label Name	Data Type
1	VAR_GLOBAL	CCLinkIEDiag	MELPT_APP_FieldbusDiag
2	VAR_GLOBAL	CCLinkDiag	MELPT_APP_FieldbusDiag
3			FieldbusDiag
4			FieldbusDiag
5			DPLineDiag
6			
7			GOTRFID
8			GOTServo
9			
10			AD_DA
11			AD_DA
12			SERDATA
13			
14	VAR_GLOBAL	AxisData	MELPT_App_AxisData(1..16)
15	VAR_GLOBAL	RFIDData_1K	RFIDData_1K(1..16)
16	VAR_GLOBAL	RFIDData_2K	RFIDData_2K(1..16)